

SVSMDVR4HI

4G - Mobile Digital Video Recorder

*GPS Tracking
GEO Fence
Live alarm*



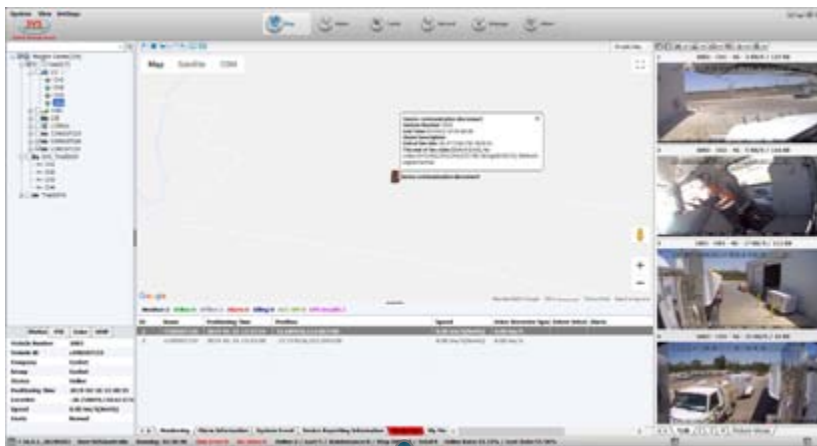
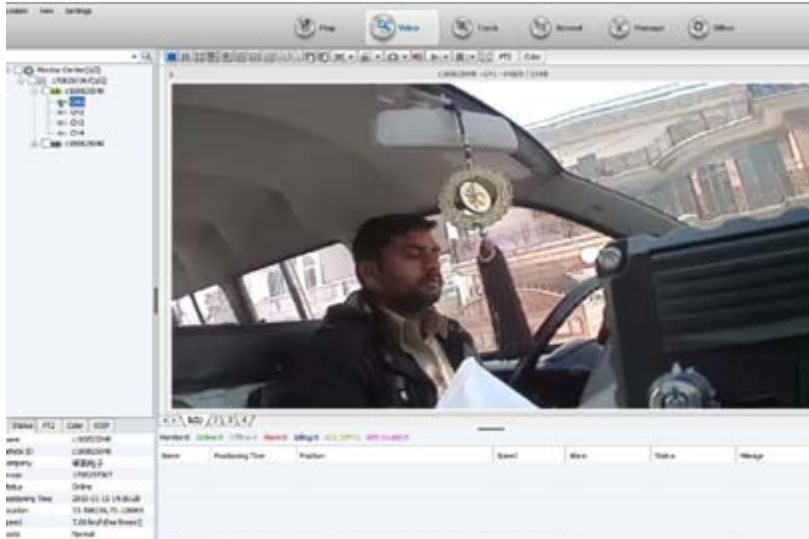
*Live video
Remote download
Remote configuration*

Model	4 Camera
Compression	H.264
SOC	Linux
System	NTSC/PAL Auto Detection
Video Input	Aviation x 4
Display Rate	NTSC: 1280 x 960
Recording	4 x 1080HD), 4 x D1 (PAL/NTSC)
Recording Rate	1080 2-8Mbps, 8 Levels video Quality
Video Output	Composite RCA for Main monitor out x 1
Audio Input	4 Channel Aviation
Audio Output	1 Channel
Audio Sampling Rate	22.05K
Display Type	Full / QUAD
Storage*	2TB SATA HDD x 1 (or SSD HDD) ; SD card x 1 — Max 128GB
Backup	USB FLASH storage backup
Firmware Upgrade	Upgrade by USB storage
Record Quality	7 selectable levels
Record Mode	Always record, Automatic SD recording when HDD crash, trigger, timed
Playback Speed	Forward x2, x4, x8, x16, x32, x64 / Return x2, x4, x8, x16, x32, x64
Playback Mode	Time Search / Event List / Quick Search
Event Type	Power On / Power Off / Video Loss / Alarm in out / HDD Format/Trigger
RTC	Battery Built-in (Parking time: adjustable)
Alarm/Relay	4 Alarm in / 1 Relay out
Alarm Function	Full screen pop / max 1 Chan output
RS-485 - RS232 - RJ45	Support
4GNetwork	YES - Built in - OPTION
WiFi	Built in (optional 2.4/5.8GHz) OPTION
Remote View/Control	YES
GPS	GPS Built in / Time calibration function
G-sensor	G-sensor Built in
TPMS	RF tyre pressure sensor detection
PTZ Protocol	Support PELCO-P/PELCO-D
Display Settings	Yes
Camera Settings	Yes
Authority Protect	User Password / Administration Password
Car Number	car number settings for record and display
Language	English / Chinese / Spanish / French / Japanese / Russian...Customisation
Dimensions/Weight	(L)147mm x (W)167mm x (H)59mm ; 1kg
Power Supply	DC9~36V ; Power On/Off control by ACC
FAN	N/A
Power Out	12V 2A (Max.)
Power Consumption	2a
Operation Temperature	MDVR: -25°C ~+60°C (Compatible HDD optional - Heat tolerance grade)



*Storage devices are not included

MDVR GUI interface main menu includes:
 Search, System setup, Rec setup, Network setup, Alarm setup,
 Peripheral setup, System Tools, System Information.



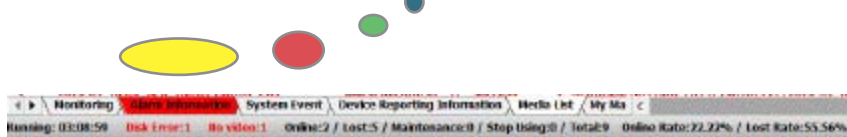
Live login (Option)

- ◆ Real time GPS tracking on Google maps
- ◆ Real time video monitoring
- ◆ Voice monitoring (option)
- ◆ Vehicle status including alarm, speed, location, mileage, parking and ACC status,
- ◆ History playback
- ◆ Geo-fencing alarm
- ◆ Route plan
- ◆ POI
- ◆ Video playback

Multiple screen & vehicle available with Live and playback options with GPS tracking and Date, Time, Speed and location details displayed with Vehicle identification overlays. Live login gives Live alarm warning snapshot and video uploads when Event occurs so a copy of the important data is captured and stored off vehicle.

Computer Software

Easy to use Computer software to connection to MDVR. Can export data from recorder to USB Stick to connect to computer for easy data download and viewing or directly from HDD to PC.



Snapshot of live vehicle data when using Remote login MDVR

